

Subject of this document is a HD-Anchor manufactured by HALFEN GmbH, which according to these instructions is cast into a reinforced concrete element of minimum concrete class C20/25 and the respective matching lifting-clutch.

Certified by: Testing- and certification body FA PSA, Zwengenberger Straße 68 in 42781 Haan, Germany
European certified body 0299

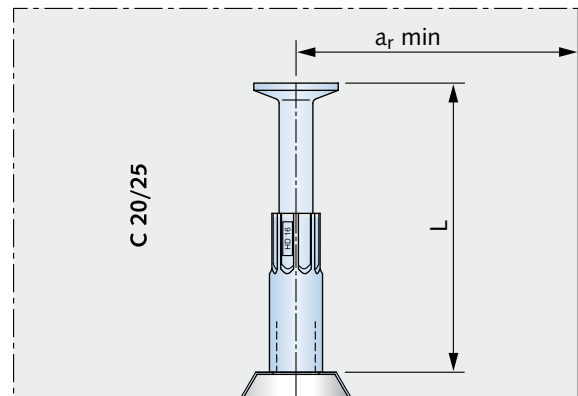
Static verification is required before installation to ensure the superstructure is suitable for forces (6 kN) incurring in a fall.

1. Cast-in HD-Anchor

The HD-Anchor (crown anchor or ring bolt) must be installed with the specified recess. Special nail plates are available to assure correct installation. Before using the attachment check the edge spacing is correct. Refer to the values in table 1.

Table 1: Cast-in HD-Anchor (Crown anchor)

anchor	a_r min [mm]	L [mm]	thread
HD-Short anchor 6360-2,5-090	125	90	Rd16
crown anchor 6380-1,2-080	125	80	Rd16



2. Lifting-clutch

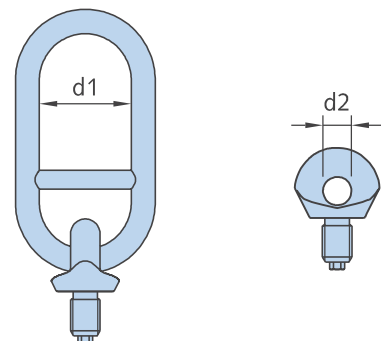
The lifting-clutch (HD-clutch or ring bolt) is screwed **fully** into the anchor (HD-Anchor or crown-anchor) and then unscrewed maximum one half of a revolution to allow the clutch free movement in load direction.

Use a suitable thread adhesive to secure and prevent the thread loosening in the sleeve (e.g. Loctite).

Check the unit is correctly fitted at regular intervals when in use.

Table 2: Dimensions

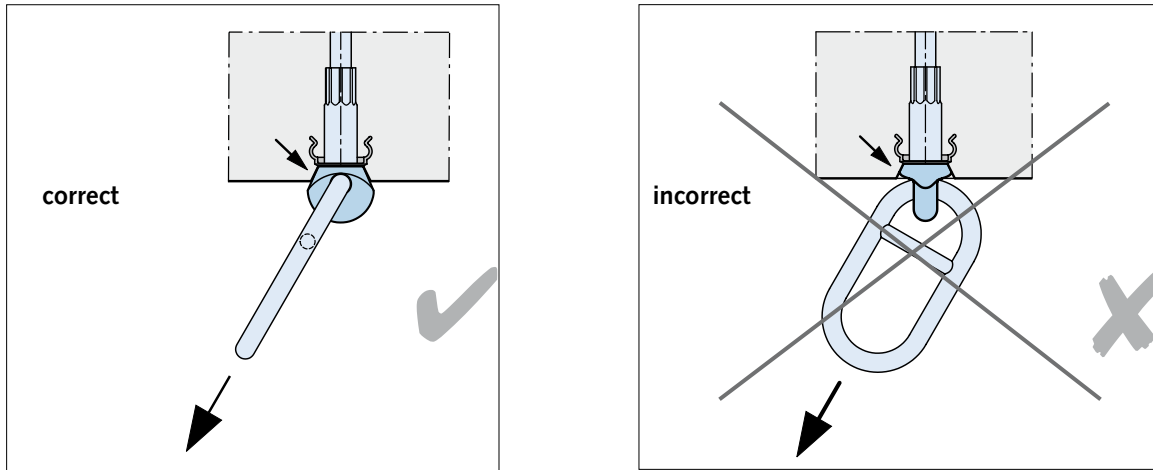
type	d_1 min [mm]	d_2 [mm]	attachment with Hook
HD-Lifting clutch 6362-2,5	50	-	type B or M
ring bolt 6338-Rd16	-	16	steel hook Typ B or M



The connecting element snap-hook/carabiner on the harness (PSE) must still remain freely moveable after being connected.

The recess formed by the nail plate and magnets in the concrete fits the contour of the HD-clutch precisely. The recess is designed so the clutch can rest against the concrete when the anchor is subjected to diagonal or shear loading.

Important: Observe load direction of clutch

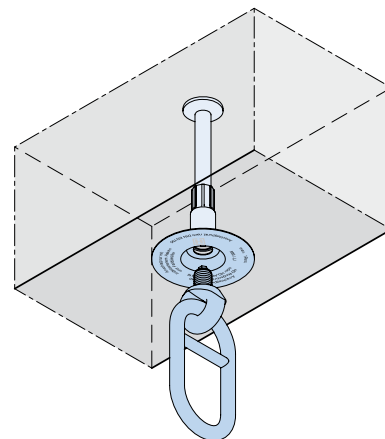
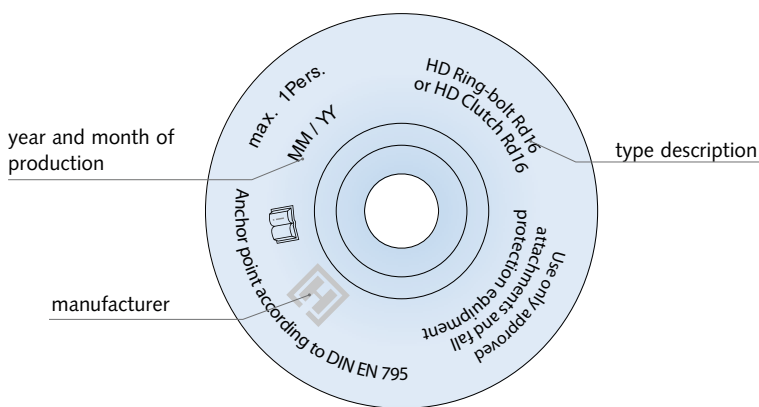


Diagonal or transverse load is not permitted

3. Identification

The cast-in HD-Anchor is identified by a cast-in plastic identification disc (included in delivery with the HD-Anchor) as a HD- 2.5. The crown anchor is identified with Rd16 marked on the sleeve. The ring-bolt and the ring-bolt for the HD-Clutch have the same identification number. The thread size (Rd16) is also marked on the ring-bolt with the year and month of manufacture marked on the HD-Clutch.

On the label for the sleeve anchor and on the ring-bolt „DEHA“ is identified as the system, while the lifting-clutch is CE-marked and „HALFEN“ identified as the manufacturer.



When using the anchor as a fall protection anchorage attachment the identification plate must be fitted between the HD-Anchor-clutch (ring bolt) and the cast-in anchor.

4. Manufacturer

The HD-Anchor system is manufactured and distributed by HALFEN GmbH, Liebigstraße 14 in 40764 Langenfeld Germany. The product is a class A1 Anchor attachment according to DIN EN 795 Abs.3.13. The product has been type-tested according to DIN EN 795 parts 4 and 5.

HALFEN GmbH



Liebigstr. 14 · 40764 Langenfeld · GERMANY
Tel.: +49 - (0)2173 / 970-9025
Fax: +49 - (0)2173 / 970-427
E-Mail: es.tpa@halfen.com
www.halfen.com

The Quality Management System of Halfen GmbH is certified for the locations in Germany, France, the Netherlands, Austria, Poland, Switzerland and the Czech Republic according to **DIN EN ISO 9001:2008**, Certificate No. QS-281 HH.

